



## StandBy Support After Suicide



1

**STANDBY ACKNOWLEDGES  
THE TRADITIONAL CUSTODIANS  
OF THE LAND ON WHICH WE WORK AND LIVE.**

OUR STAFF RECOGNISE THE ABORIGINAL AND TORRES STRAIT  
ISLANDER COMMUNITY AND THEIR CONTINUING  
CONNECTION TO LAND AND WATER. WE PAY RESPECTS TO  
ELDERS PAST, PRESENT AND FUTURE.

© StandBy

2



## Recognition of Lived Experience



3



**Karen Phillips - StandBy General Manager**

**Susan Vaughan - StandBy Program Manager**



4

# SUICIDE IMPACTS EVERYONE.

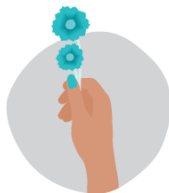
© StandBy

5



## Our Vision

Every community in Australia is safe, inclusive, and supportive of those bereaved or impacted by suicide.



## Our Mission

Everything we do is to support and advocate for the health and wellbeing of individuals, groups and communities bereaved or impacted by suicide.

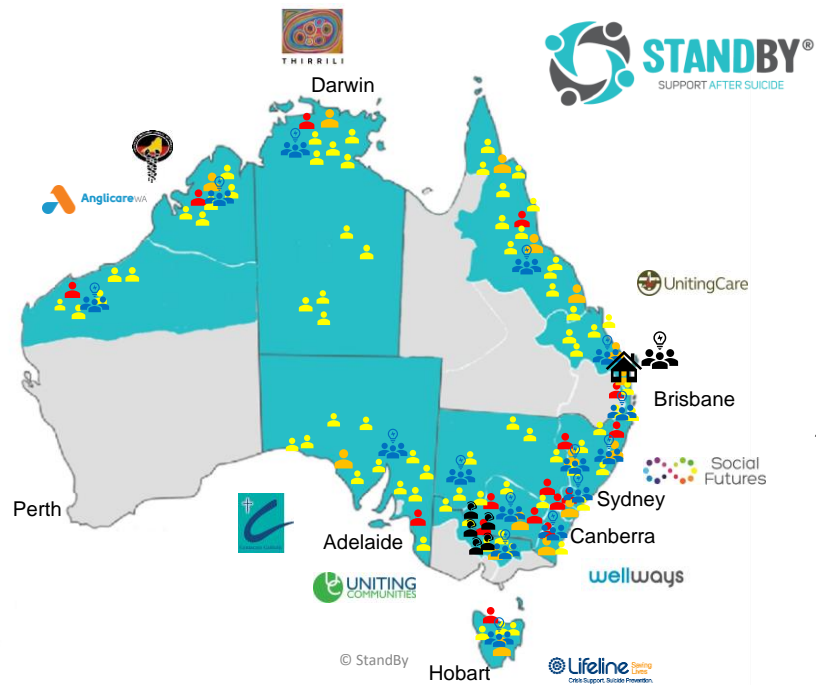


## Our Values

Respect – Understanding – Empathic Support

© StandBy

6



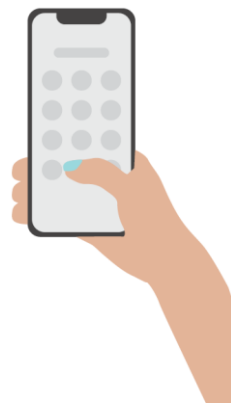
7



## First Responders

Different agreements in different regions including:

- Formal / Informal agreements
- Referral Systems
- Training of police cadets
- Provision of information packs



© StandBy

8



Healthcare providers



Service providers



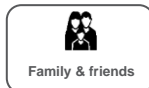
## Healthcare / Service Providers

- Primary Health Networks
- Suicide Prevention Networks
- Pathways to Care Workshops
- Community Events
- Social Media



© StandBy

9

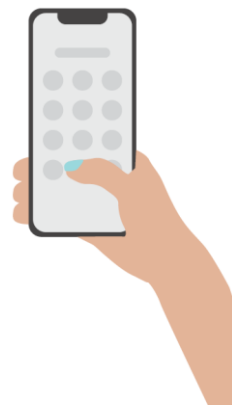


Family &amp; friends



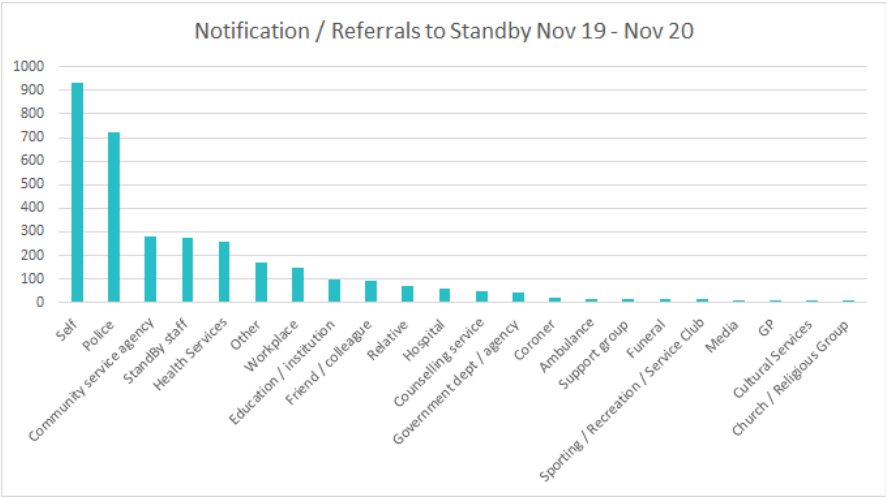
## Family / Friends / Self

- Information passed on by First Responders
- Community Groups / Clubs
- Community Events
- Population Level Awareness Campaigns



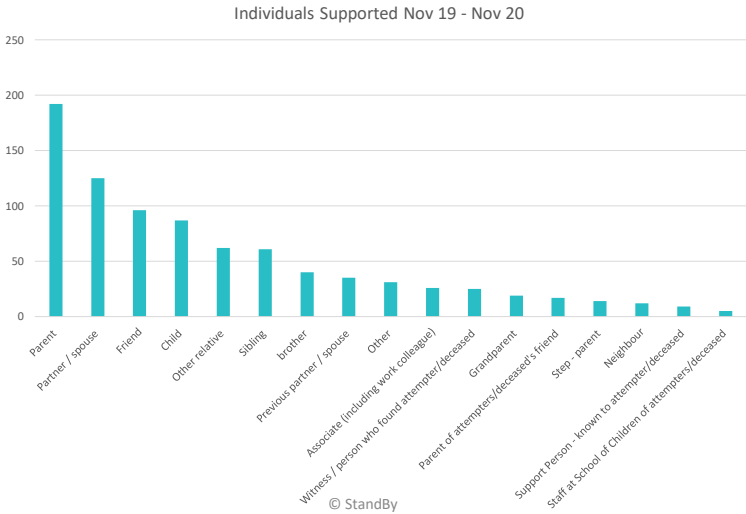
© StandBy

10



© StandBy

11



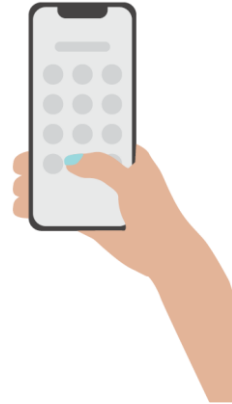
© StandBy

12



## StandBy Initiated

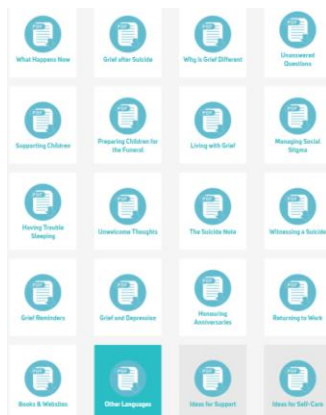
- Active Postvention
- Community Postvention Protocols



© StandBy

13

## Support Packs and Lived Experience Stories



© StandBy

14





## StandBy Support After Suicide LLH2H



15



© StandBy

16



© StandBy

## Activity Books for Children and Young People



© StandBy

## Workplace Toolkits



© StandBy

19

## Thank-you



20